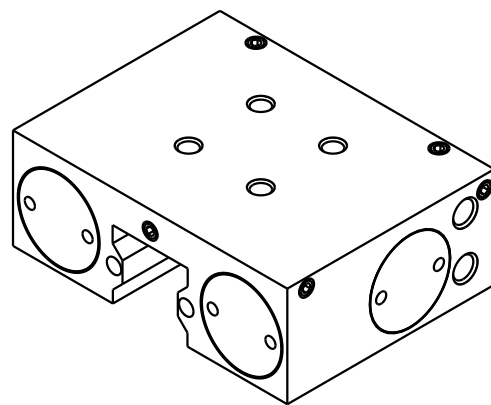
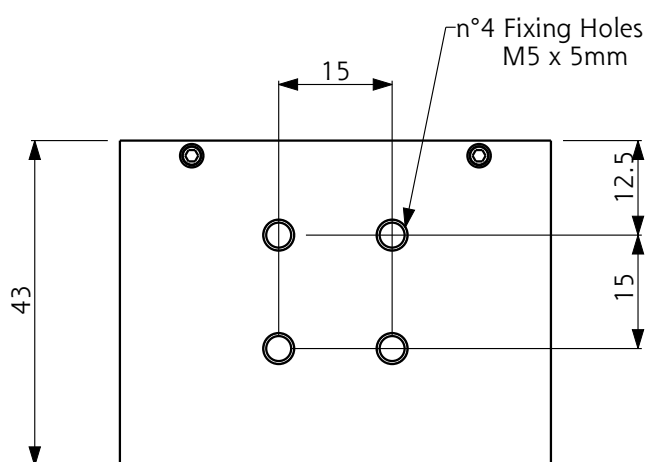
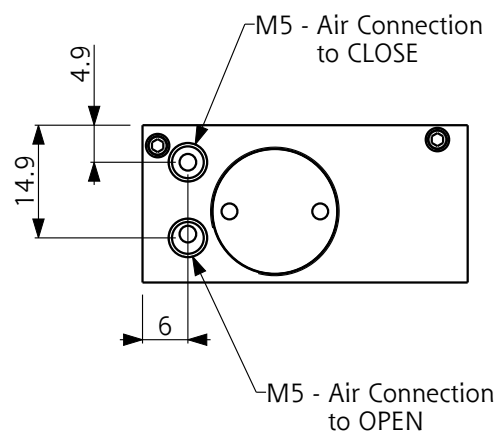
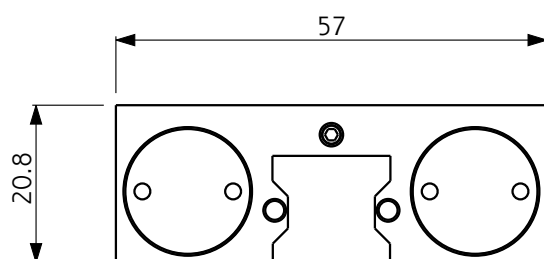


A

B

C

D



REV.	DATA REVISIONE	DESCRIZIONE MODIFICA	FIRMA
-	-	-	-



Pneumatic Element F15S001E  
Normally Open - Double Effect - Force: 650N

DISEGNATO M. Nobile	MATERIALE	DUREZZA/RESISTENZA	FORNITORE:	
CONTROLLATO	TRATTAMENTO TERMICO -	TOLLERANZA GENERALE dove non spec. usare tolleranze UNI EN286-1, EN286-2, EN22768-f	FASE/PARTICOLARE	N°PEZZI --
DATA 21-04-2021	TRATTAMENTO SUPERFICIALE -	SCALA 1:1	CODICE DISEGNO F15S001E	REV.